



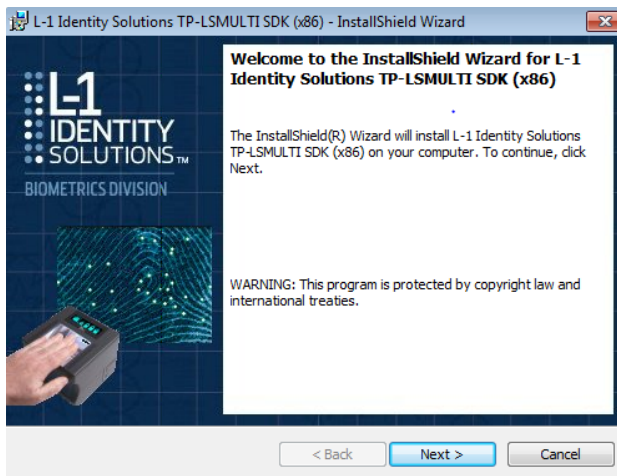
# First Advantage

A Symphony Technology Group Company

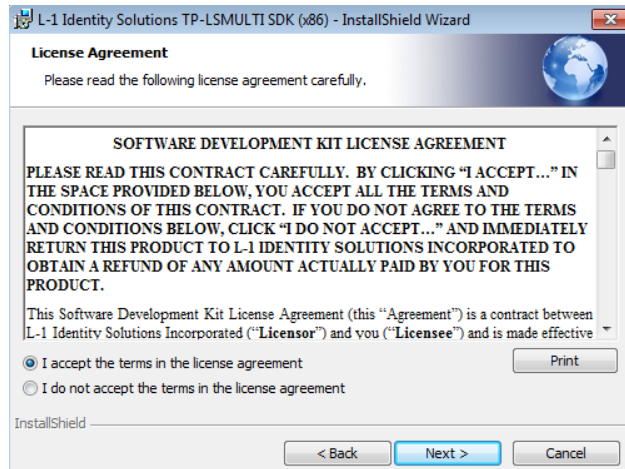
## L1 Identix 4100 Livescan Driver Installation Instructions for Windows 7 32-bit Operating System

**\*Administrator access to the computer is required when installing the driver.**

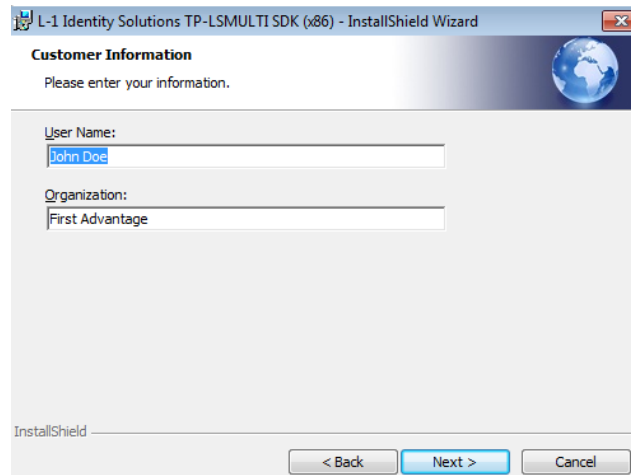
1. The fingerprint scanner should not be plugged into the computer.
2. Download the L1 Identix 4100 (32-bit) Driver at [www.fadv.com/livescan](http://www.fadv.com/livescan) and save to your desktop.
3. Right click the downloaded file "TP-LSMULTI-SDK32\_7.11.zip" and select Extract here.
4. Double click TP-LSMULTI-SDK32\_7.11 and then select setup.exe.
5. Select Yes at the User Account Control prompt.
6. Click Next.



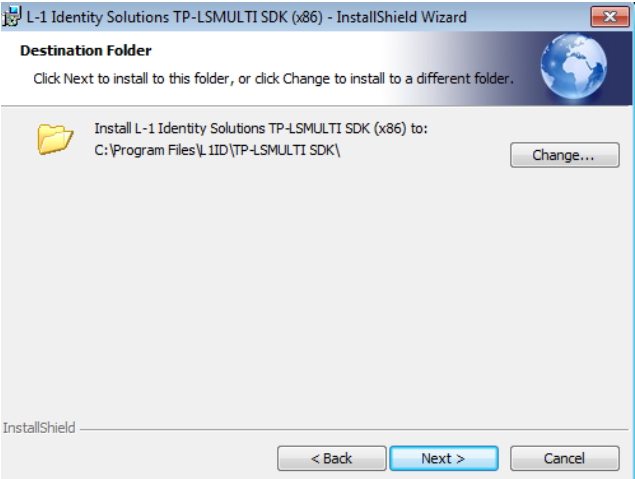
## 7. Select I accept..., then click Next



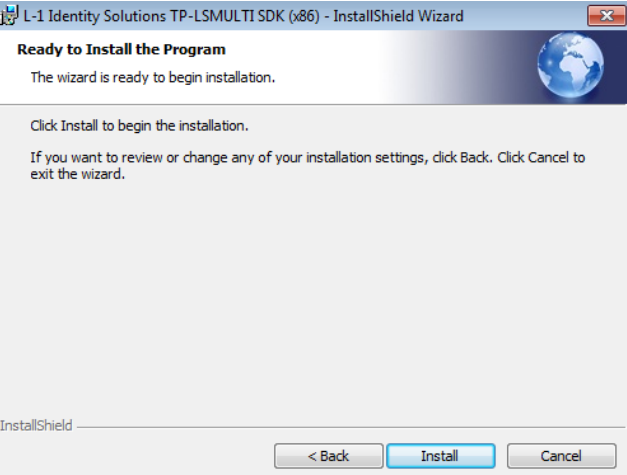
## 8. The User Name and Organization are optional. Select Next.



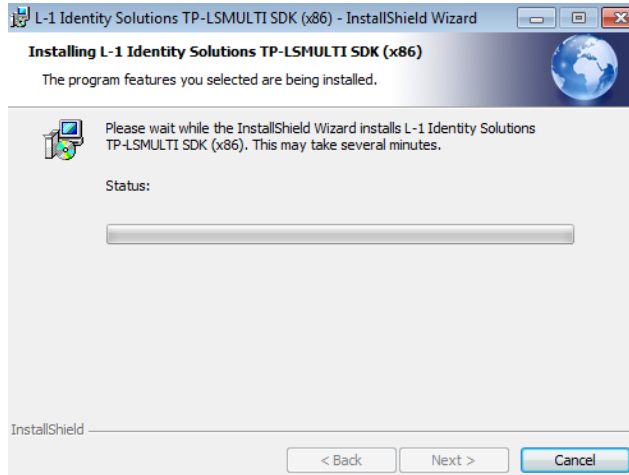
9. Click Next.



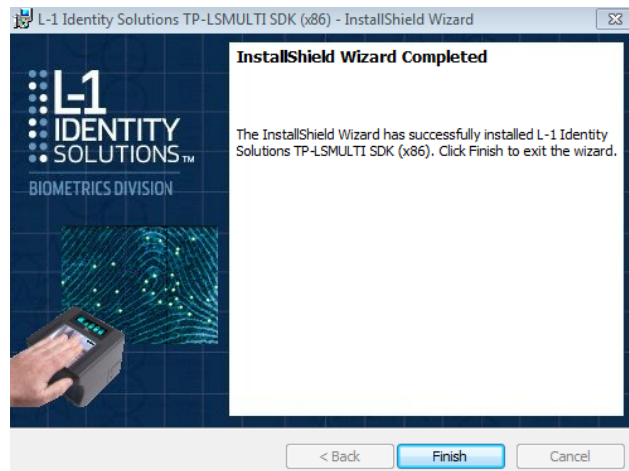
10. Click Install.



## 11. Installation begins.



## 12. Select Finish.



## 13. Plug the scanner into the computer and then the computer should detect the new hardware and finish installing.

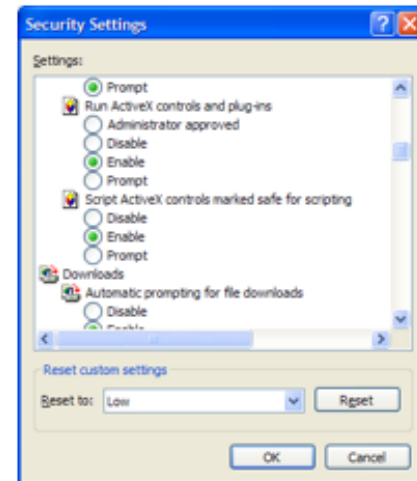
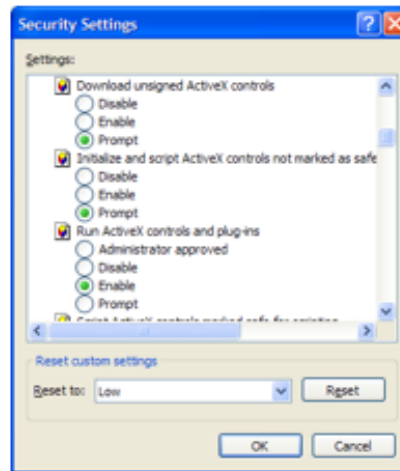
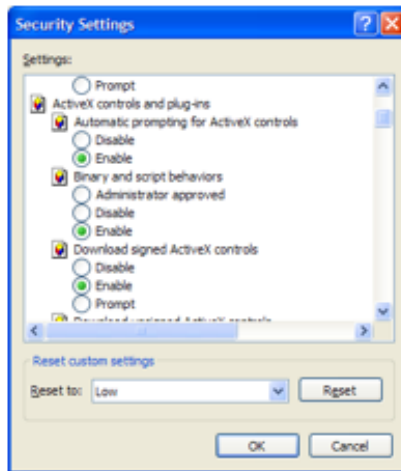
14. The first time the scanner is used go to the Start menu, All Programs, right click on Internet Explorer (not 64-bit) and select Run as administrator.
15. Check ActiveX control settings by following the instructions below.

### ActiveX Control Settings

**Before logging into Fingerprint Advantage check the following: Open Internet Explorer, click on Tools, then Internet Options. Select the Security tab, then Custom Level... button at the bottom.**

**“ActiveX controls and plug-ins” should have the these settings:**

- Automatic prompting for ActiveX controls – **Enable**
- Binary and script behaviors - **Enable**
- Download signed ActiveX controls – **Prompt**
- Download unsigned ActiveX controls – **Disable**
- Initialize and script ActiveX controls not marked as safe – **Prompt**
- Run ActiveX controls and plug-ins – **Enable**
- Script ActiveX controls marked for safe scripting – **Enable**



16. Log into Fingerprint Advantage (if you don't have login credential contact Support at 877-491-1752). When you get to the fingerprint capture page install the ActiveX control at the prompt. If the screen doesn't open and allow you to capture fingerprints click on Previous, then click on Next again.